

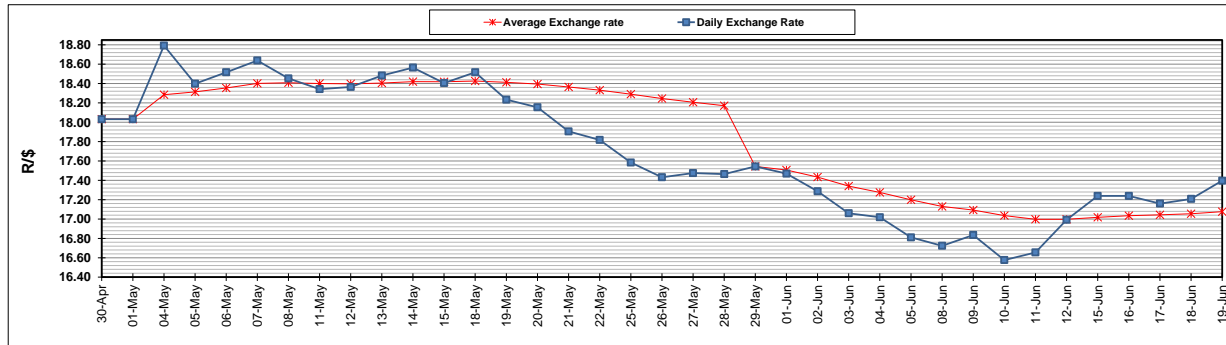
	PETROL 95 ULP	PETROL 93 ULP & LRP	DIESEL 0.05%	DIESEL 0.005%	ILL. PAR.
GAUTENG PUMP PRICE (SA c/l) AS FROM 03/06/2020	1,340.000	1,320.000	-	-	-
WHOLESALE PRICE (SA c/l) AS FROM 03/06/2020	-	-	1,138.560	1,138.960	489.828
SINGLE NATIONAL MAXIMUM RETAIL PRICE	-	-	-	-	597.000
BASIC FUEL PRICE - 19/06/2020 (SA c/l)	608.458	588.624	606.755	609.858	552.645
PRESS RELEASE CONTRIBUTION TO BFP 03/06/2020 - 19/06/2020 (SA c/l)	392.770	382.770	379.630	388.030	285.128
UNIT OVER/(UNDER) RECOVERY - 19/06/2020 (SA c/l)	(215.688)	(205.854)	(227.125)	(221.828)	(267.517)
AVERAGE BASIC FUEL PRICE 29/05/2020 - 19/06/2020	536.439	516.385	539.480	543.478	483.739
AVERAGE UNIT OVER/(UNDER) RECOVERY 29/05/2020 - 19/06/2020	(165.794)	(155.740)	(163.975)	(159.386)	(206.111)

ANALYSIS MOVEMENT OF AVERAGE OVER/(UNDER) RECOVERY

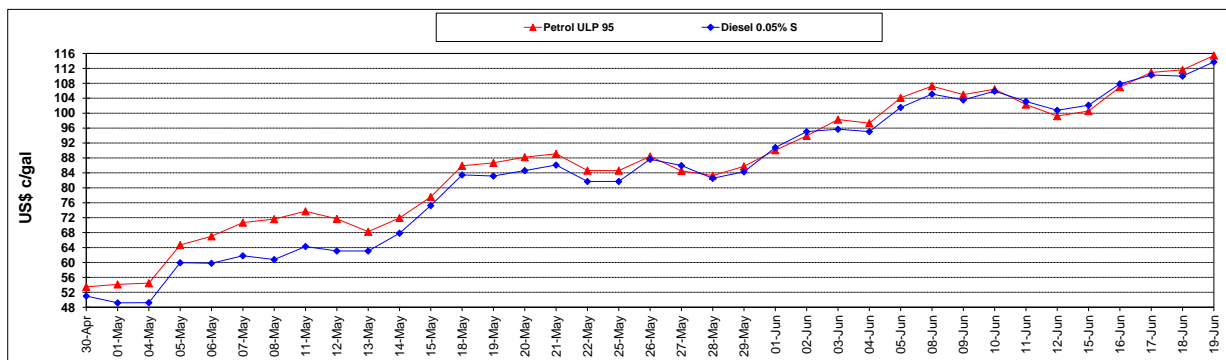
	PETROL 95	PETROL 93	DIESEL 0.05%	DIESEL 0.005%	ILL. PAR.
- MOVEMENT IN INTERNATIONAL PRODUCT PRICES	(200.219)	(188.878)	(198.595)	(194.262)	(237.154)
- MOVEMENT IN EXCHANGE RATE	34.425	33.138	34.620	34.877	31.043
AVERAGE UNIT OVER/(UNDER) RECOVERY 29/05/2020 - 19/06/2020	(165.794)	(155.740)	(163.975)	(159.386)	(206.111)

R/\$ EXCHANGE RATE - (R/\$17.3965 - 19/06/2020)

EXCHANGE RATE USED IN BASIC FUEL PRICE



INTERNATIONAL PRODUCT PRICES OF BASKET USED IN BASIC FUEL PRICE



BASIC FUEL PRICE IN SA CENTS PER LITRE

